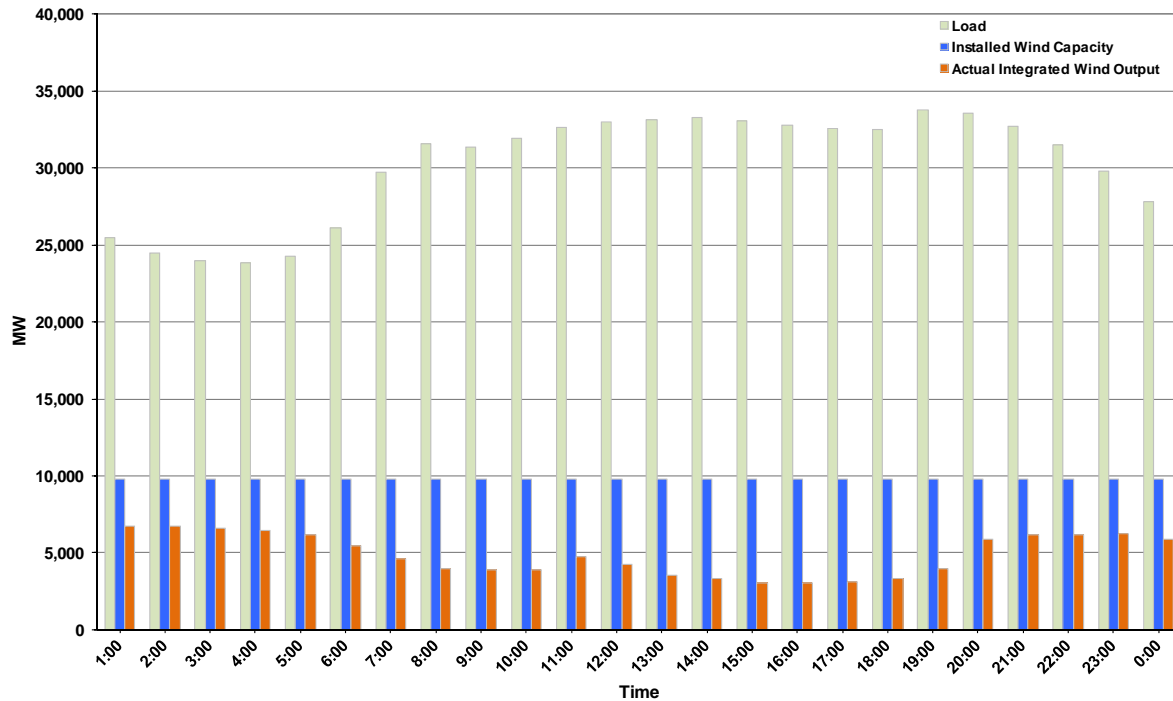




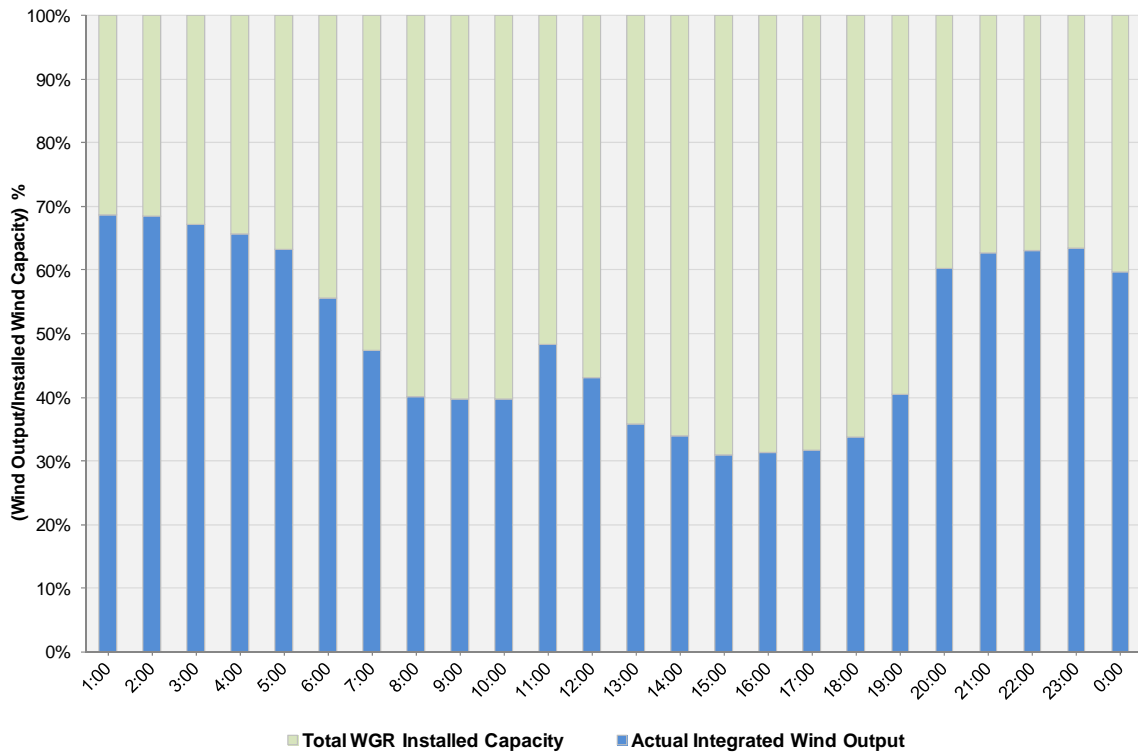
ERCOT Grid Operations Wind Integration Report: 02/03/12

Peak Load	33,733 MW
Load Peak Hour (HE)	19
Wind over Peak	3,970 MW
Wind Record 10/07/11	7,400 MW
Max Wind Value	6,862 MW
Wind Peak Time	00:53
Wind Integration %	27.32%

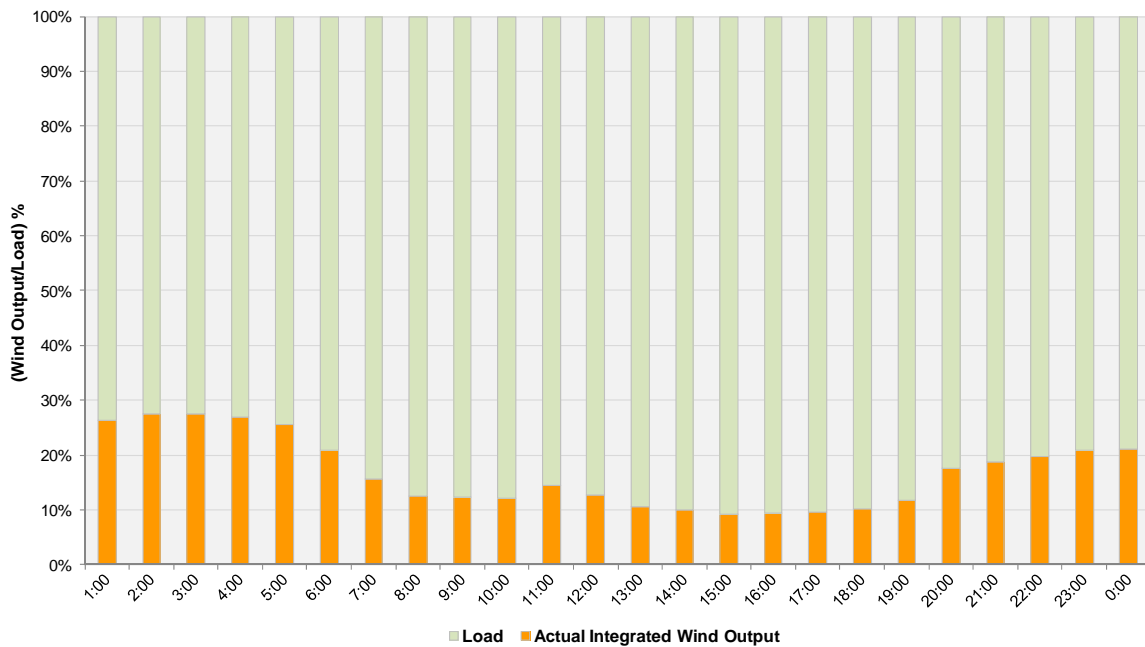
**Hourly Average Actual Load vs. Actual Wind Output
02-03-2012**



Actual Wind Output as a Percentage of the Total Installed Wind Capacity
02-03-2012



Actual Wind Output as a Percentage of the ERCOT Load
02-03-2012



ERCOT Load vs. Actual Wind Output 1/27/2012 - 2/3/2012

